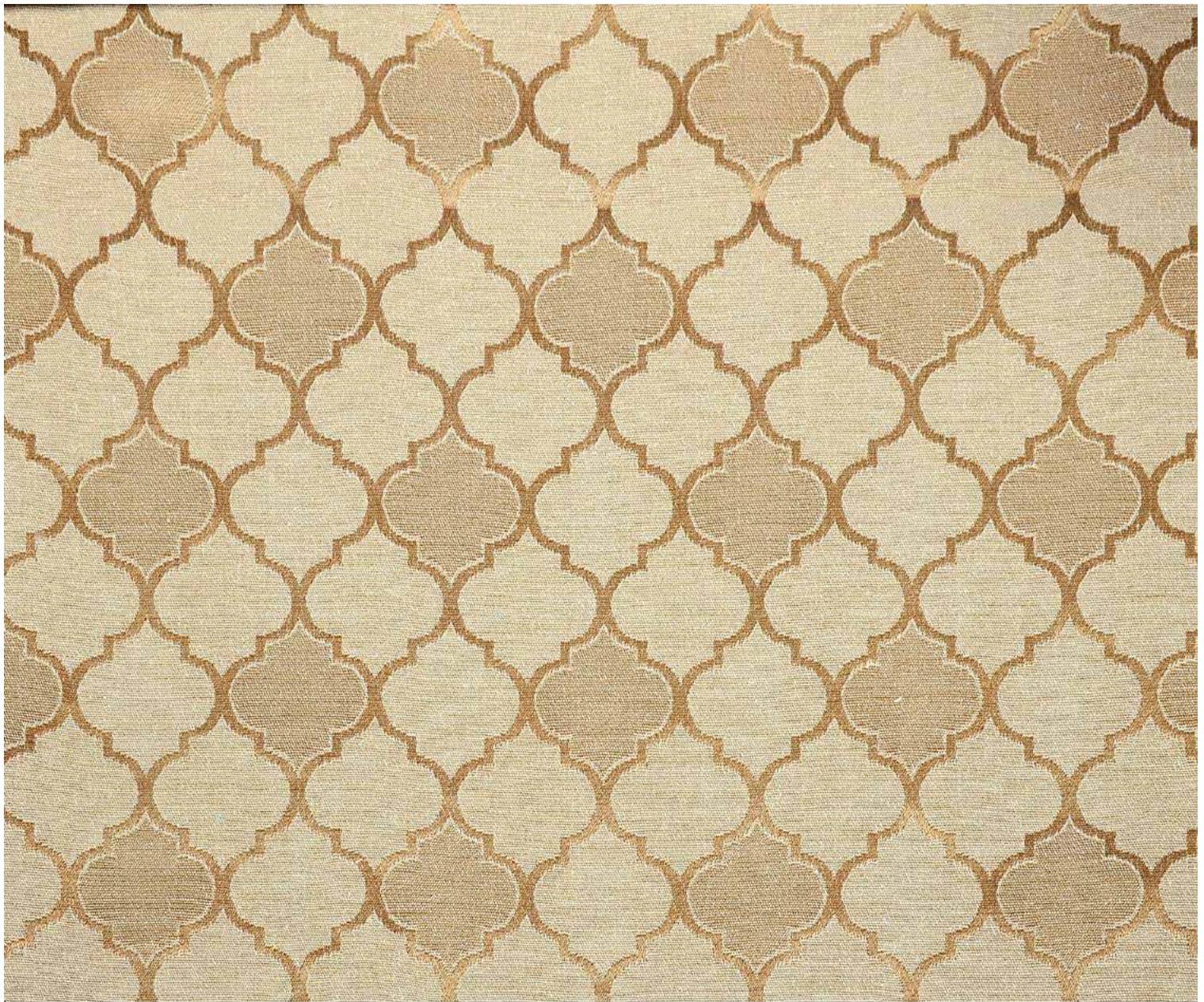


A dimly lit living room with a patterned sofa and a window with curtains. The word "CARI" is overlaid in a large, white, stylized font.

CARI



CARI

Width : 48"
Vertical : 10.50 CMS
Horizontal : 8 CMS
Weight : 260 GSM

SERIAL NO. : CT101

Composition : 48% Poly./52% Cotton

Colour Shades May Slightly Vary From Dye Lot To Dye Lot

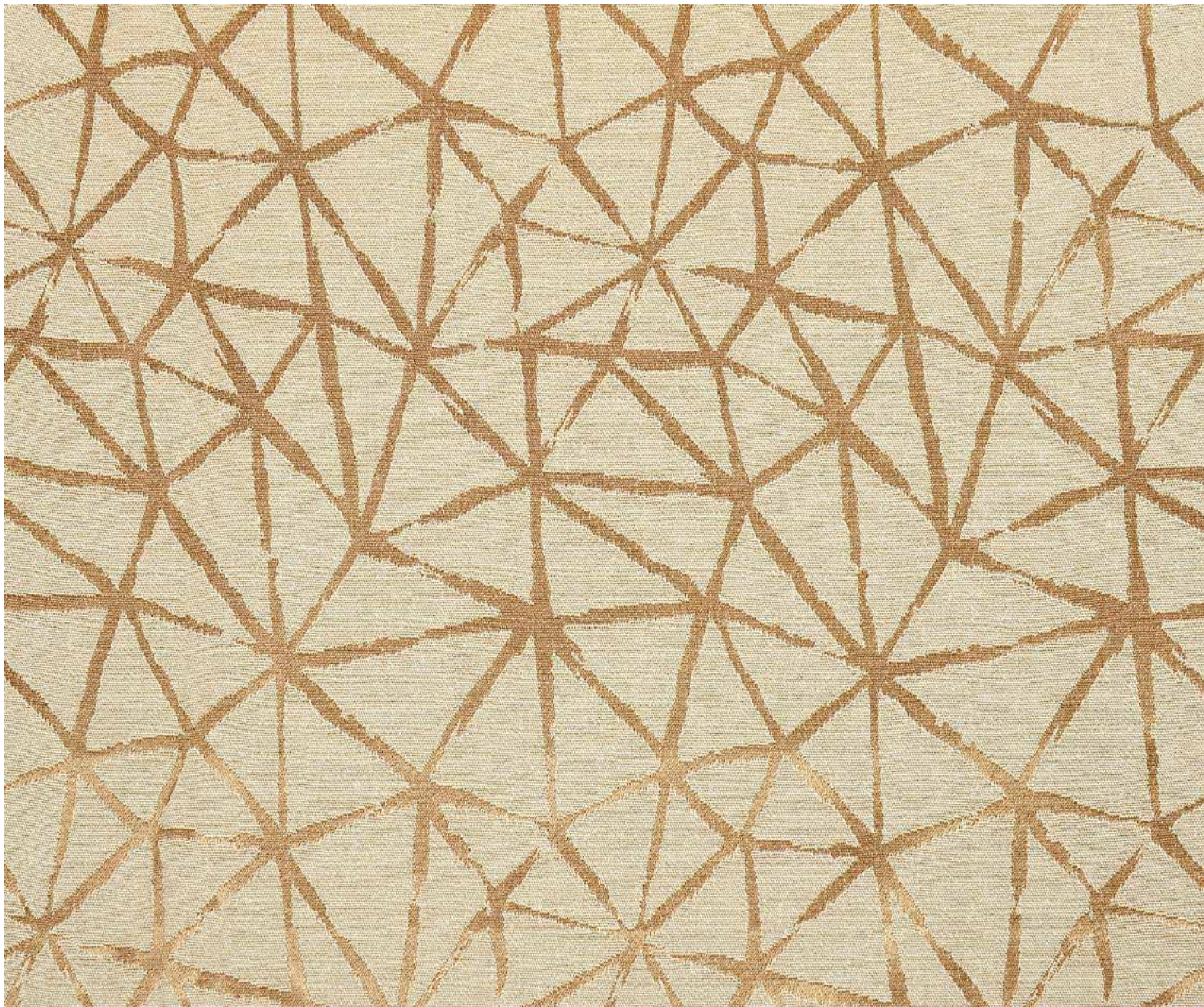


CARI

Width : 48"
Vertical : 17 CMS
Horizontal : 16.50 CMS
Weight : 260 GSM

Composition : 48% Poly./52% Cotton
Colour Shades May Slightly Vary From Dye Lot To Dye Lot

SERIAL NO. : CT102



CARI

Width : 48"
Vertical : 19 CMS
Horizontal : 16.50 CMS
Weight : 260 GSM

SERIAL NO. : CT103

Composition : 48% Poly./52% Cotton
Colour Shades May Slightly Vary From Dye Lot To Dye Lot

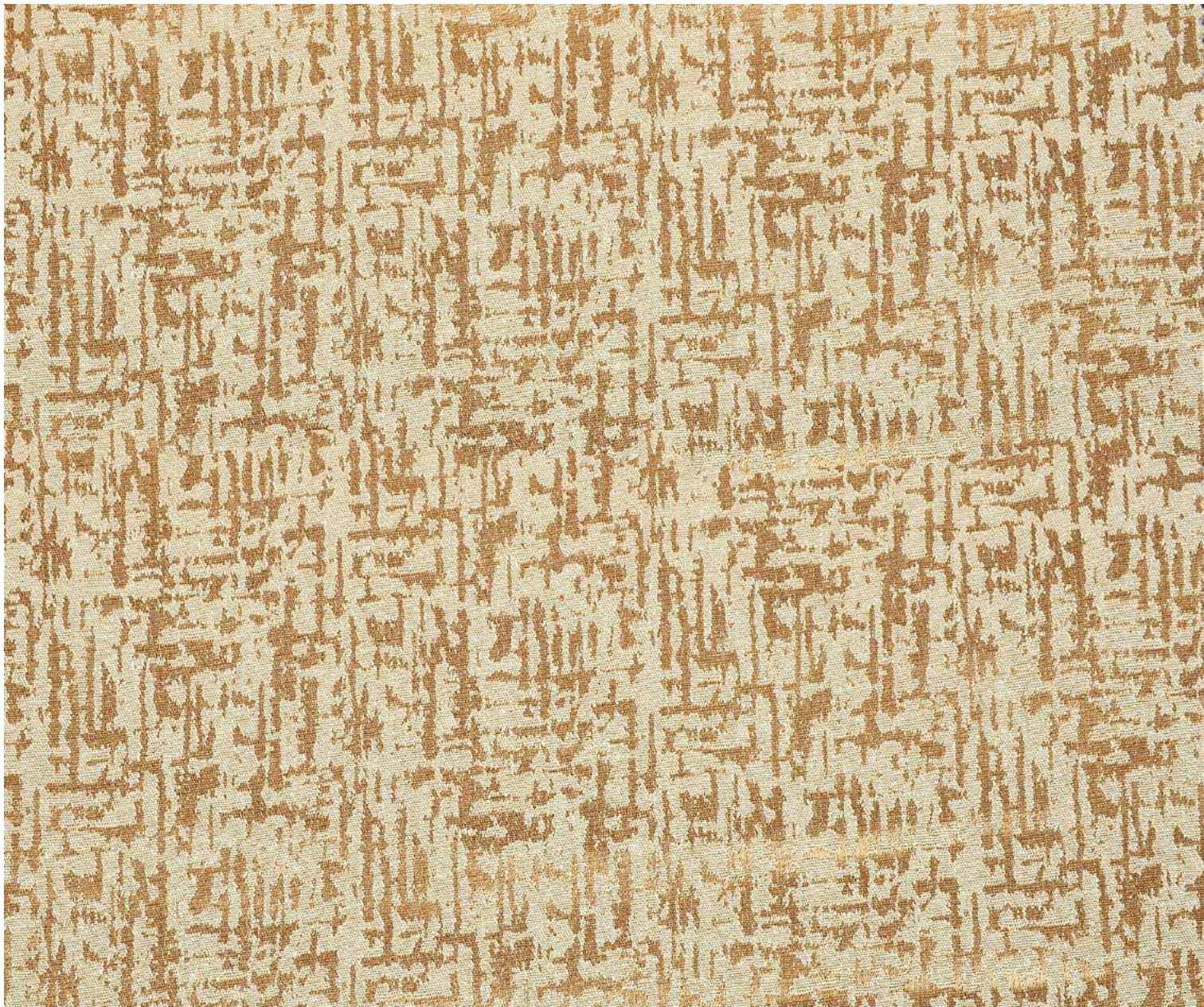


CARI

Width : 48"
Vertical : 22.50 CMS
Horizontal : 16.50 CMS
Weight : 260 GSM

Composition : 48% Poly./52% Cotton
Colour Shades May Slightly Vary From Dye Lot To Dye Lot

SERIAL NO. : CT104



CARI

Width : 48"
Vertical : 12 CMS
Horizontal : 17 CMS
Weight : 260 GSM

SERIAL NO. : CT105

Composition : 48% Poly./52% Cotton
Colour Shades May Slightly Vary From Dye Lot To Dye Lot



CARI

Width : 48"
Vertical : 10.50 CMS
Horizontal : 8 CMS
Weight : 260 GSM

SERIAL NO. : CT106

Composition : 48% Poly./52% Cotton

Colour Shades May Slightly Vary From Dye Lot To Dye Lot

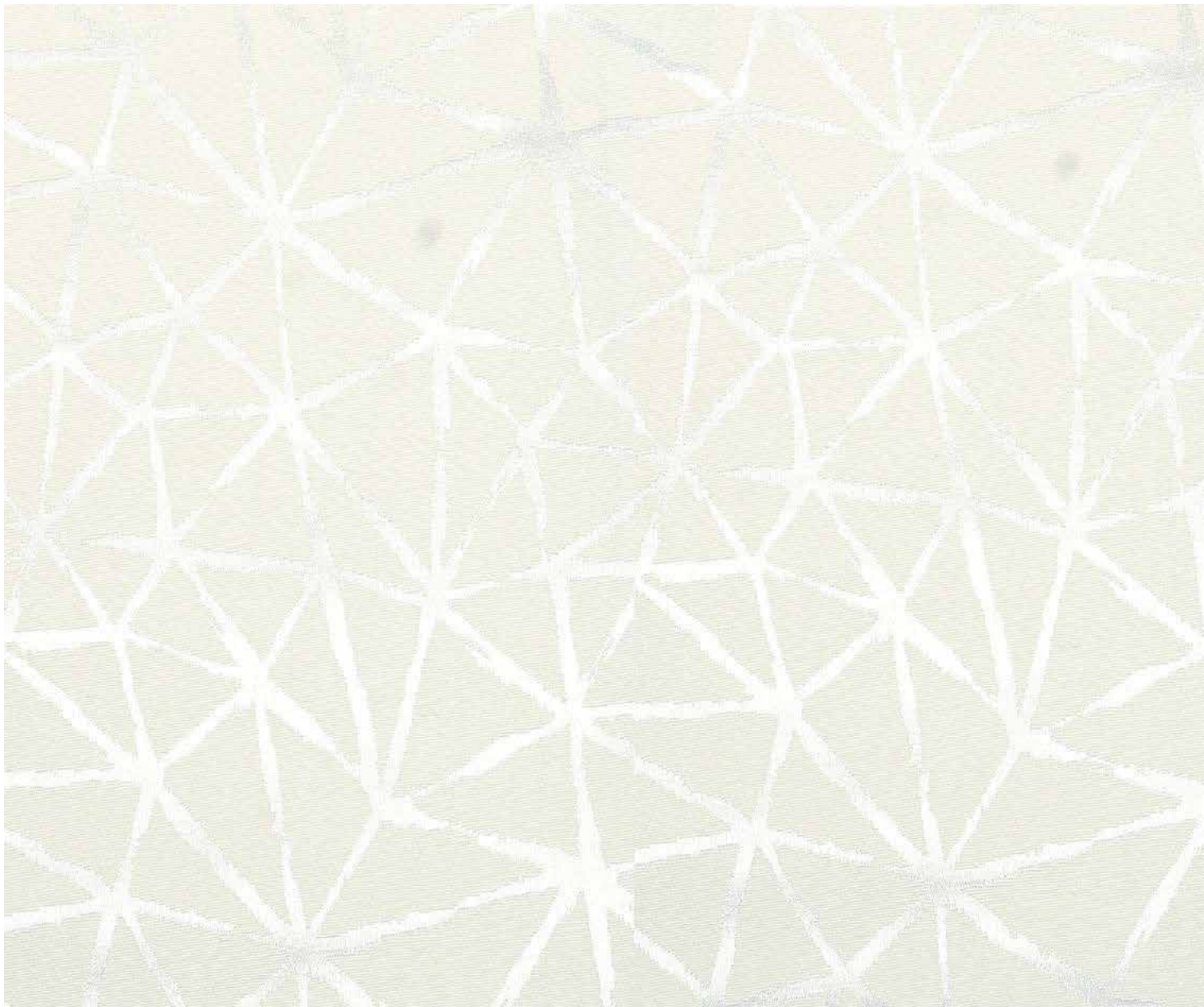


CARI

Width : 48"
Vertical : 17 CMS
Horizontal : 16.50 CMS
Weight : 260 GSM

SERIAL NO. : CT107

Composition : 48% Poly./52% Cotton
Colour Shades May Slightly Vary From Dye Lot To Dye Lot



CARI

Width : 48"
Vertical : 19 CMS
Horizontal : 16.50 CMS
Weight : 260 GSM

SERIAL NO. : CT108

Composition : 48% Poly./52% Cotton
Colour Shades May Slightly Vary From Dye Lot To Dye Lot



CARI

Width : 48"
Vertical : 22.50 CMS
Horizontal : 16.50 CMS
Weight : 260 GSM

SERIAL NO. : CT109

Composition : 48% Poly./52% Cotton
Colour Shades May Slightly Vary From Dye Lot To Dye Lot



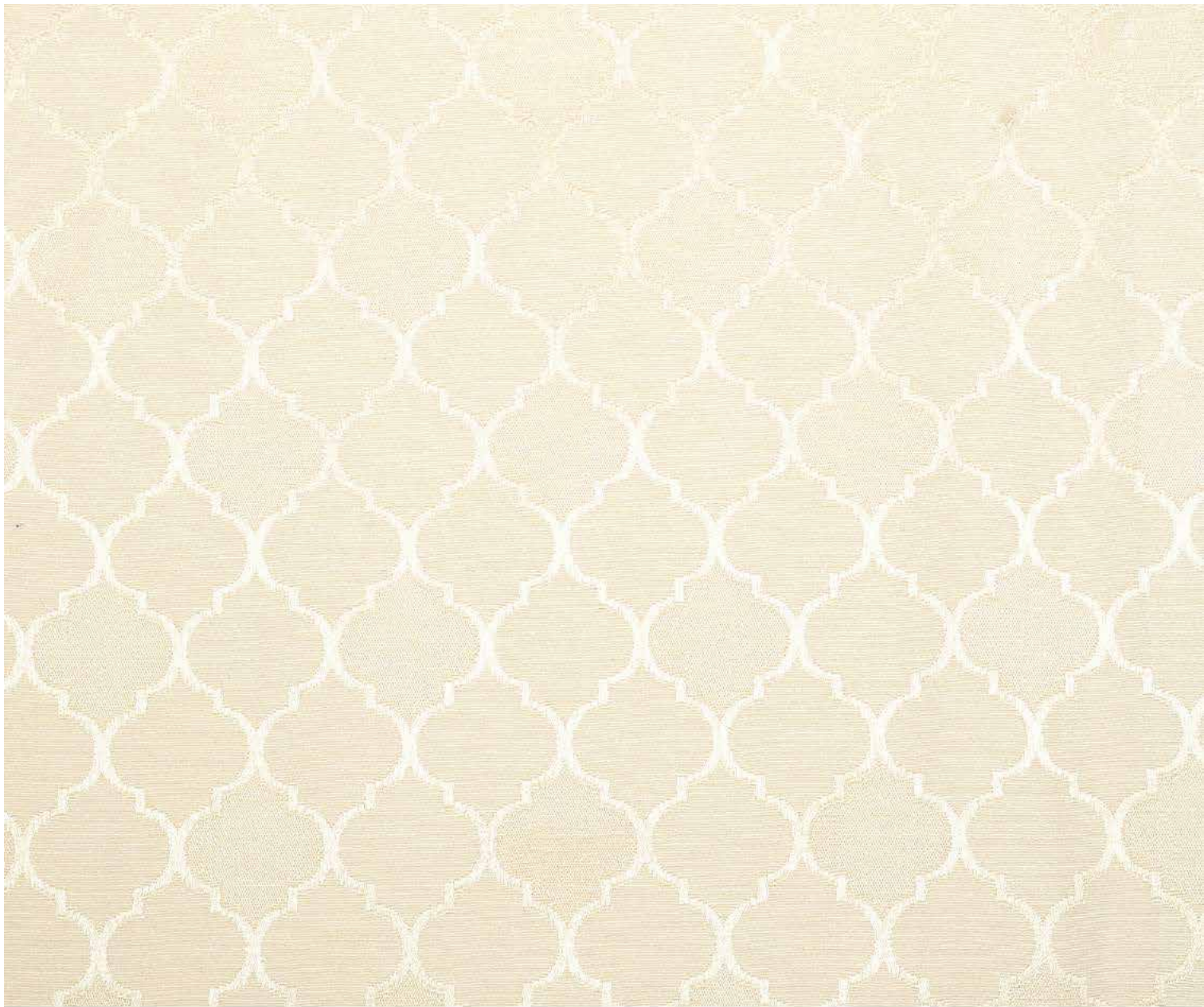
CARI

Width : 48"
Vertical : 12 CMS
Horizontal : 17 CMS
Weight : 260 GSM

SERIAL NO. : CT110

Composition : 48% Poly./52% Cotton

Colour Shades May Slightly Vary From Dye Lot To Dye Lot



CARI

Width : 48"
Vertical : 10.50 CMS
Horizontal : 8 CMS
Weight : 260 GSM

SERIAL NO. : CT111

Composition : 48% Poly./52% Cotton
Colour Shades May Slightly Vary From Dye Lot To Dye Lot



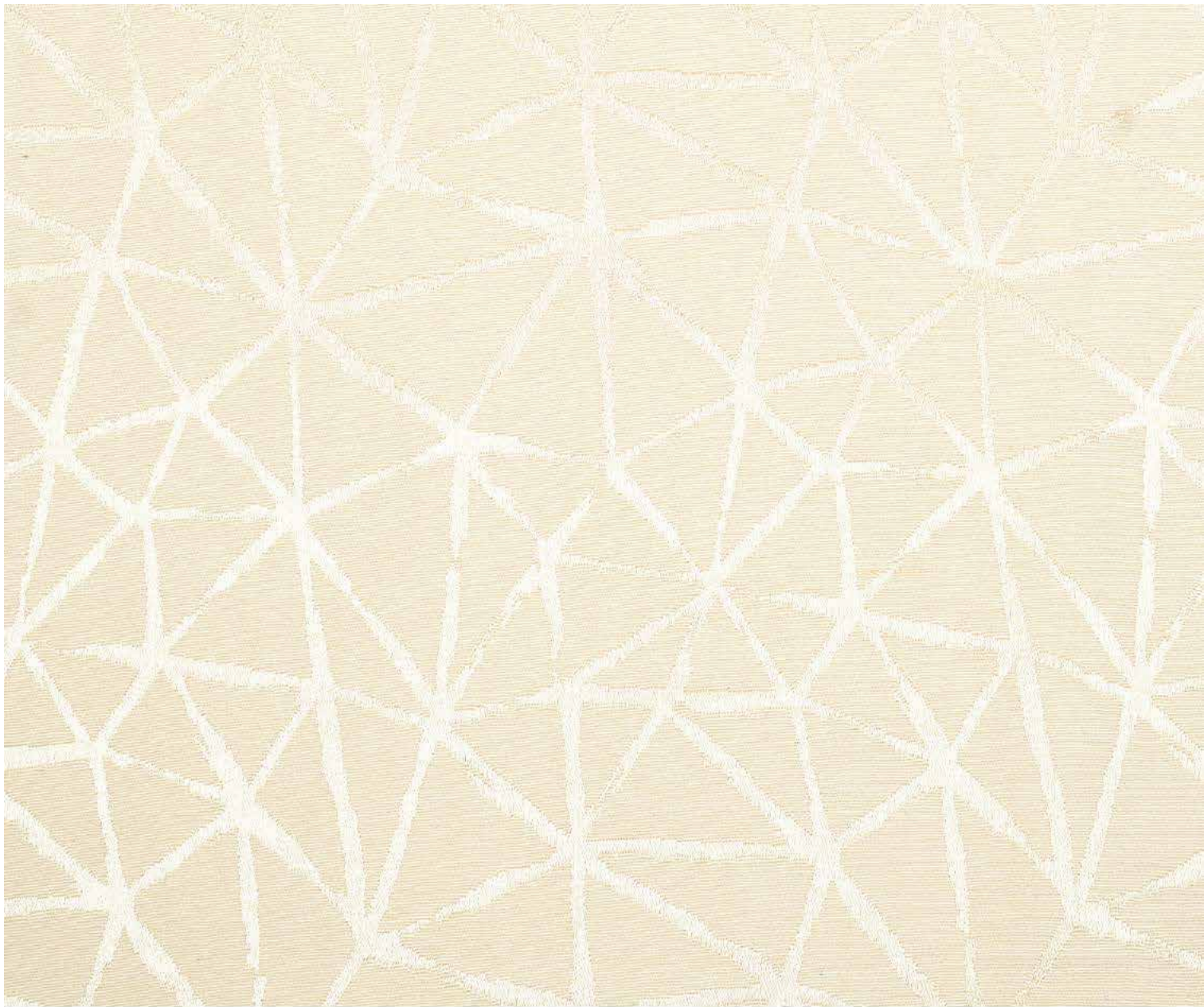
CARI

Width : 48"
Vertical : 17 CMS
Horizontal : 16.50 CMS
Weight : 260 GSM

Composition : 48% Poly./52% Cotton

Colour Shades May Slightly Vary From Dye Lot To Dye Lot

SERIAL NO. : CT112



CARI

Width : 48"
Vertical : 19 CMS
Horizontal : 16.50 CMS
Weight : 260 GSM

Composition : 48% Poly./52% Cotton
Colour Shades May Slightly Vary From Dye Lot To Dye Lot

SERIAL NO. : CT113



CARI

Width : 48"
Vertical : 22.50 CMS
Horizontal : 16.50 CMS
Weight : 260 GSM

SERIAL NO. : CT114

Composition : 48% Poly./52% Cotton
Colour Shades May Slightly Vary From Dye Lot To Dye Lot



CARI

Width : 48"
Vertical : 12 CMS
Horizontal : 17 CMS
Weight : 260 GSM

Composition : 48% Poly./52% Cotton
Colour Shades May Slightly Vary From Dye Lot To Dye Lot

SERIAL NO. : CT115



CARI

Width : 48"
Vertical : 10.50 CMS
Horizontal : 8 CMS
Weight : 260 GSM

SERIAL NO. : CT116

Composition : 48% Poly./52% Cotton
Colour Shades May Slightly Vary From Dye Lot To Dye Lot



CARI

Width : 48"
Vertical : 17 CMS
Horizontal : 16.50 CMS
Weight : 260 GSM

Composition : 48% Poly./52% Cotton
Colour Shades May Slightly Vary From Dye Lot To Dye Lot

SERIAL NO. : CT117



CARI

Width : 48"
Vertical : 19 CMS
Horizontal : 16.50 CMS
Weight : 260 GSM

SERIAL NO. : CT118

Composition : 48% Poly./52% Cotton
Colour Shades May Slightly Vary From Dye Lot To Dye Lot

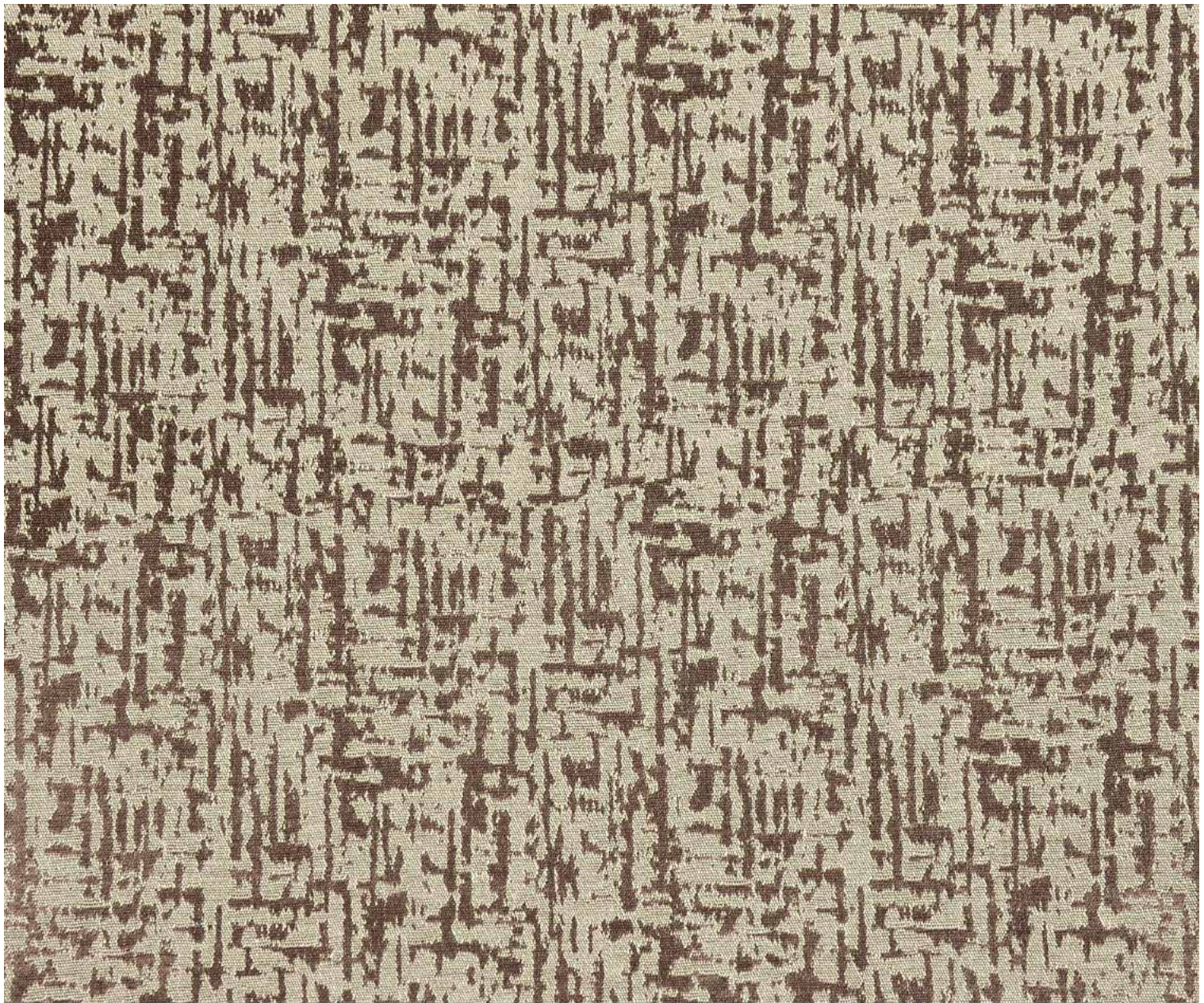


CARI

Width : 48"
Vertical : 22.50 CMS
Horizontal : 16.50 CMS
Weight : 260 GSM

SERIAL NO. : CT119

Composition : 48% Poly./52% Cotton
Colour Shades May Slightly Vary From Dye Lot To Dye Lot



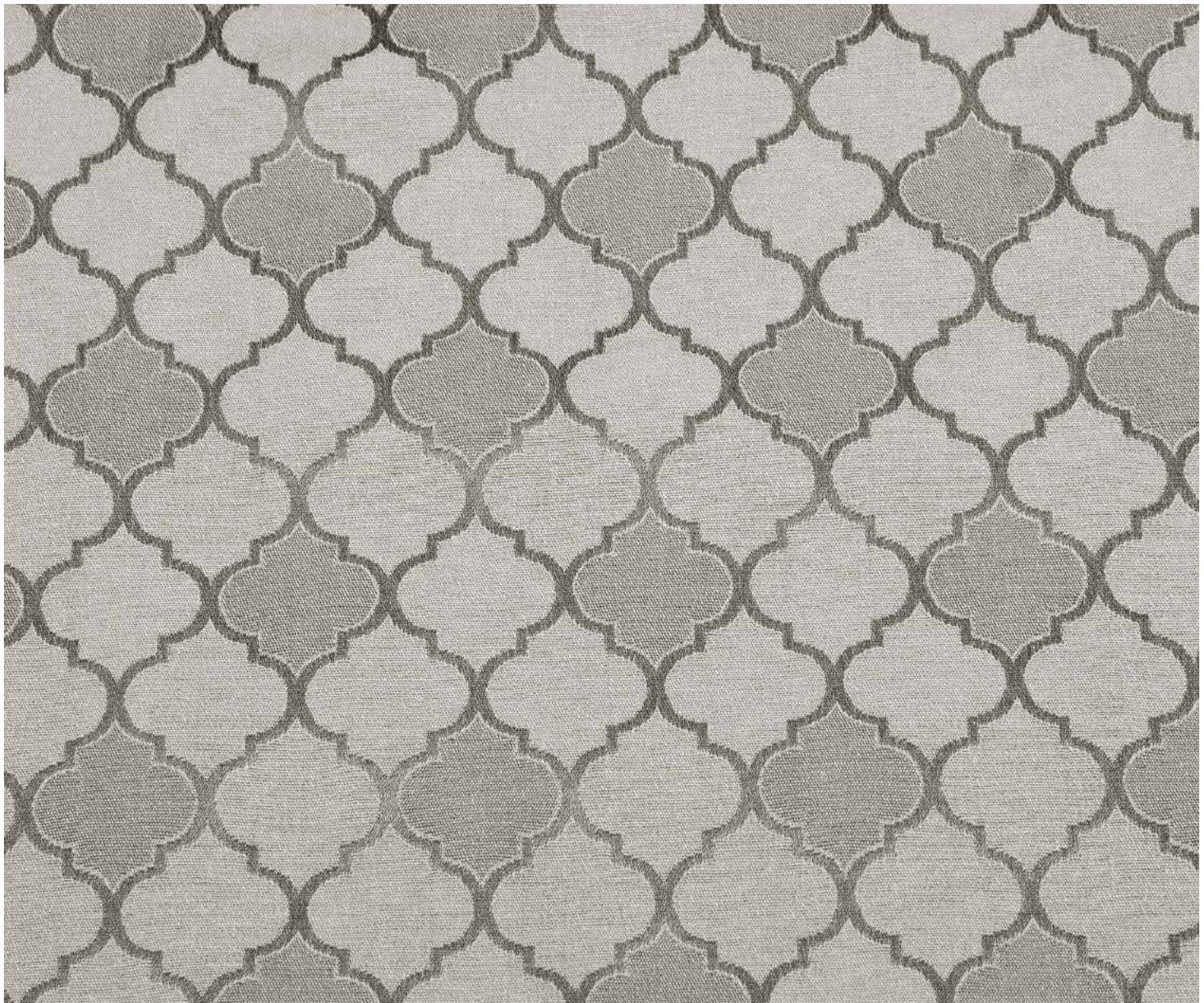
CARI

Width : 48"
Vertical : 12 CMS
Horizontal : 17 CMS
Weight : 260 GSM

SERIAL NO. : CT120

Composition : 48% Poly./52% Cotton

Colour Shades May Slightly Vary From Dye Lot To Dye Lot



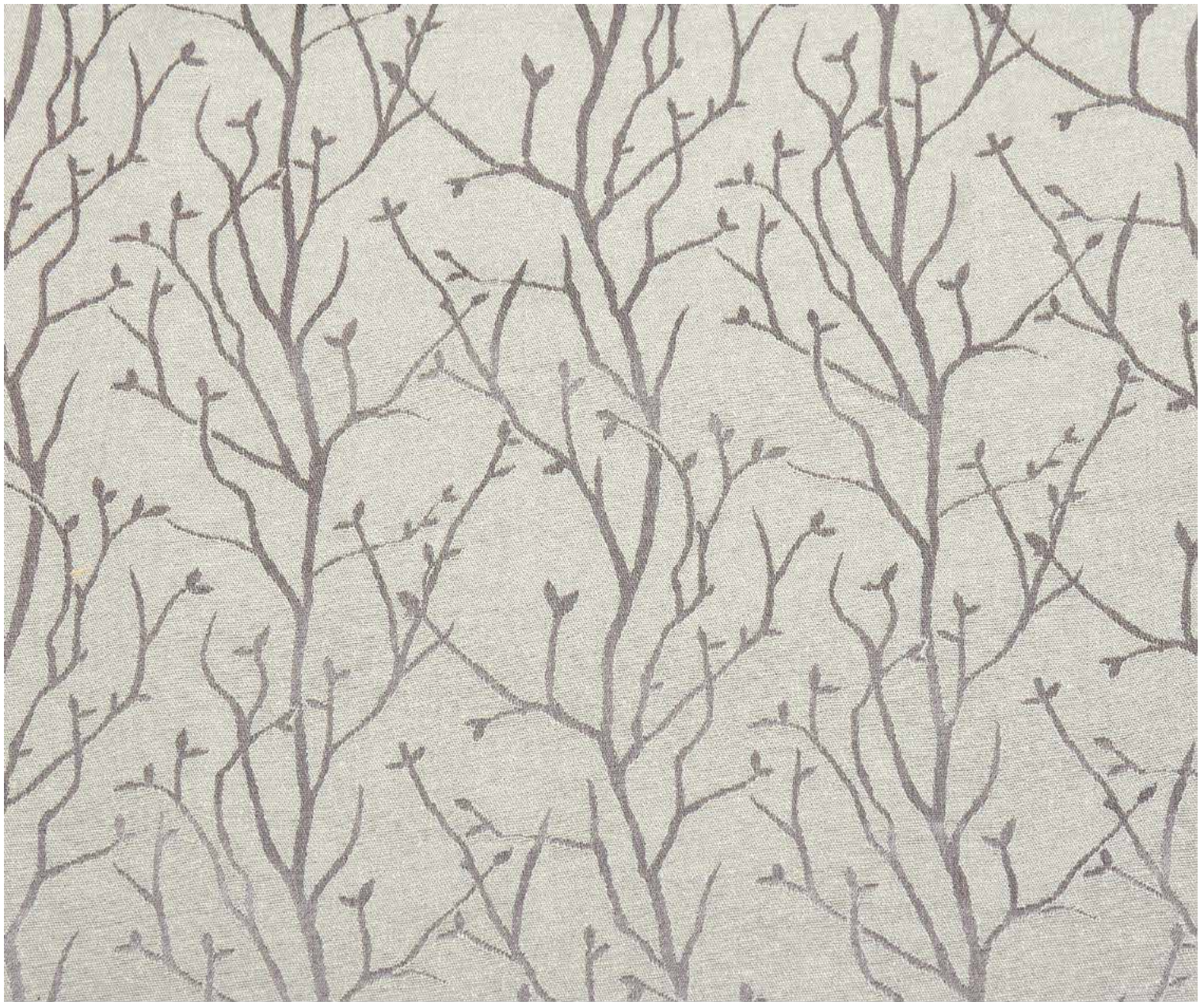
CARI

Width : 48"
Vertical : 10.50 CMS
Horizontal : 8 CMS
Weight : 260 GSM

SERIAL NO. : CT121

Composition : 48% Poly./52% Cotton

Colour Shades May Slightly Vary From Dye Lot To Dye Lot

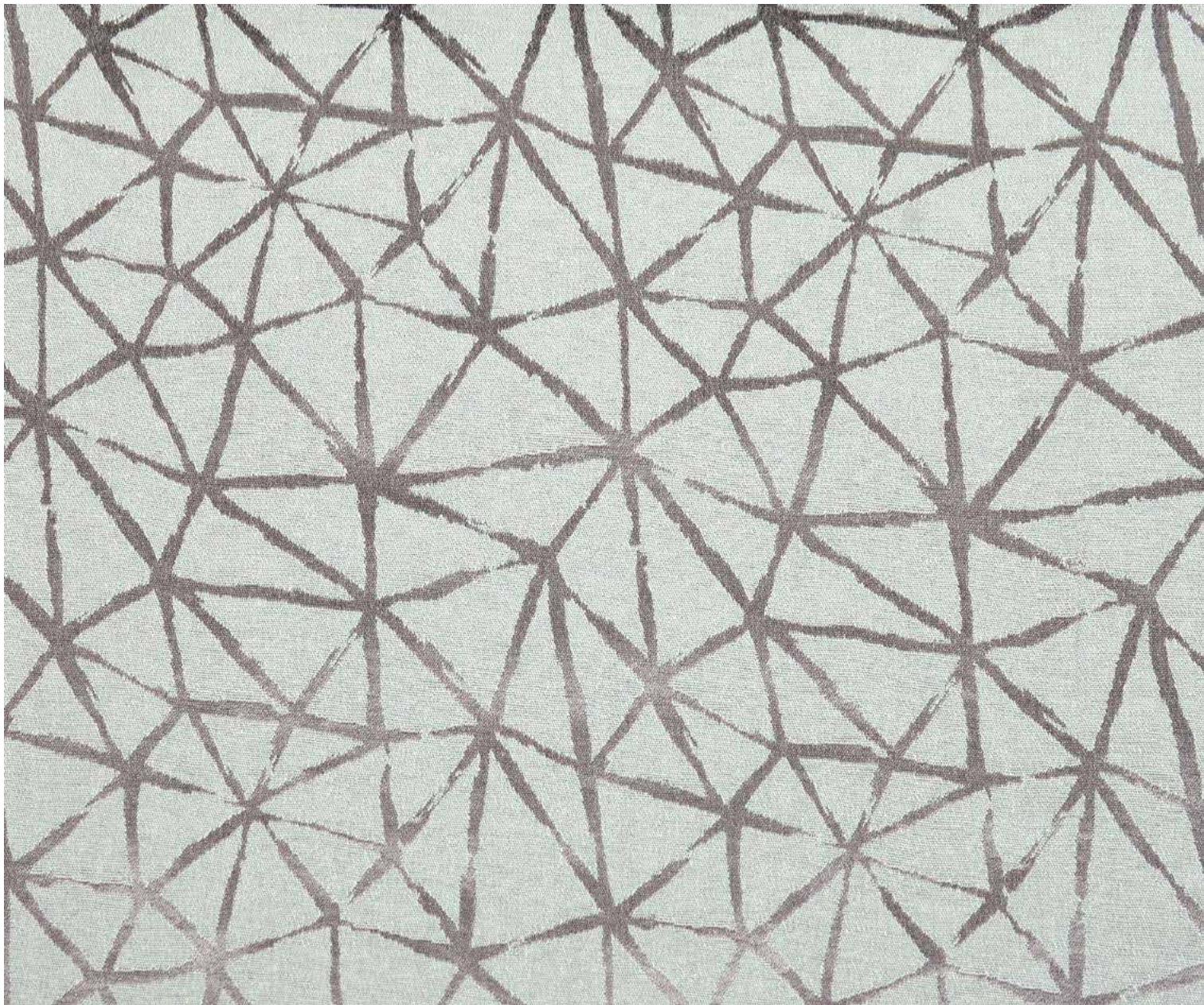


CARI

Width : 48"
Vertical : 17 CMS
Horizontal : 16.50 CMS
Weight : 260 GSM

SERIAL NO. : CT122

Composition : 48% Poly./52% Cotton
Colour Shades May Slightly Vary From Dye Lot To Dye Lot



CARI

Width : 48"
Vertical : 19 CMS
Horizontal : 16.50 CMS
Weight : 260 GSM

SERIAL NO. : CT123

Composition : 48% Poly./52% Cotton
Colour Shades May Slightly Vary From Dye Lot To Dye Lot

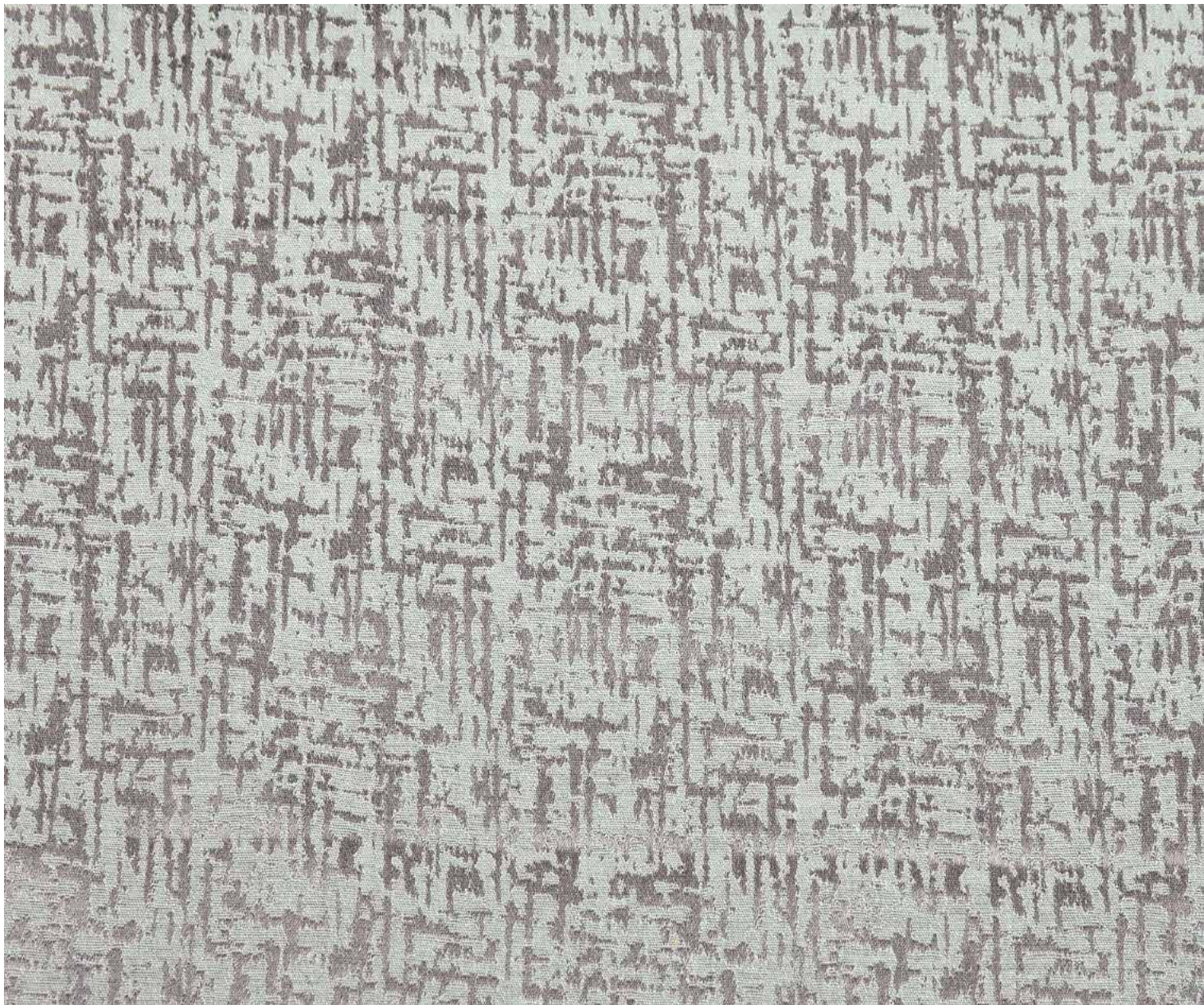


CARI

Width : 48"
Vertical : 22.50 CMS
Horizontal : 16.50 CMS
Weight : 260 GSM

SERIAL NO. : CT124

Composition : 48% Poly./52% Cotton
Colour Shades May Slightly Vary From Dye Lot To Dye Lot

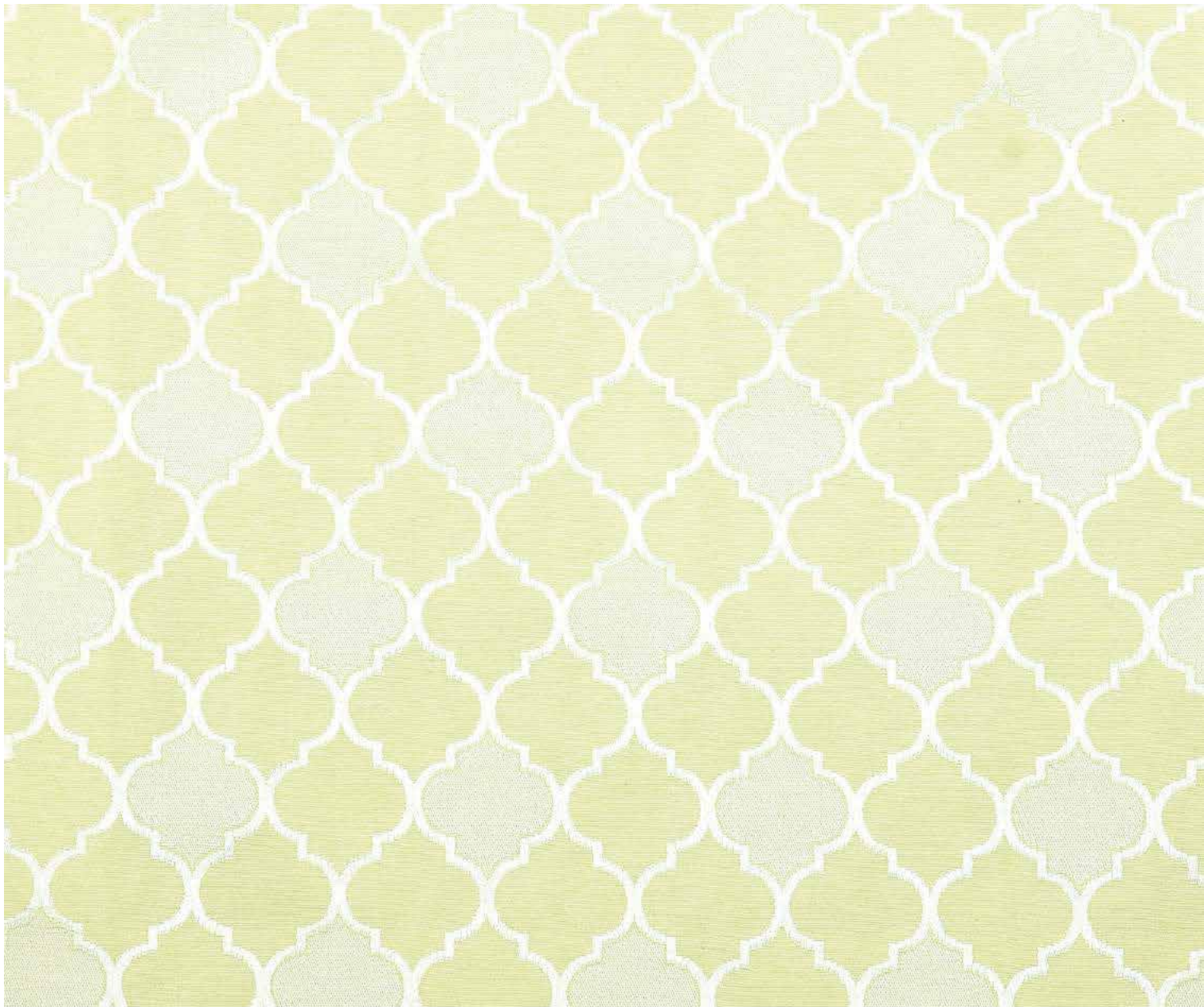


CARI

Width : 48"
Vertical : 12 CMS
Horizontal : 17 CMS
Weight : 260 GSM

SERIAL NO. : CT125

Composition : 48% Poly./52% Cotton
Colour Shades May Slightly Vary From Dye Lot To Dye Lot



CARI

Width : 48"
Vertical : 10.50 CMS
Horizontal : 8 CMS
Weight : 260 GSM

SERIAL NO. : CT126

Composition : 48% Poly./52% Cotton
Colour Shades May Slightly Vary From Dye Lot To Dye Lot

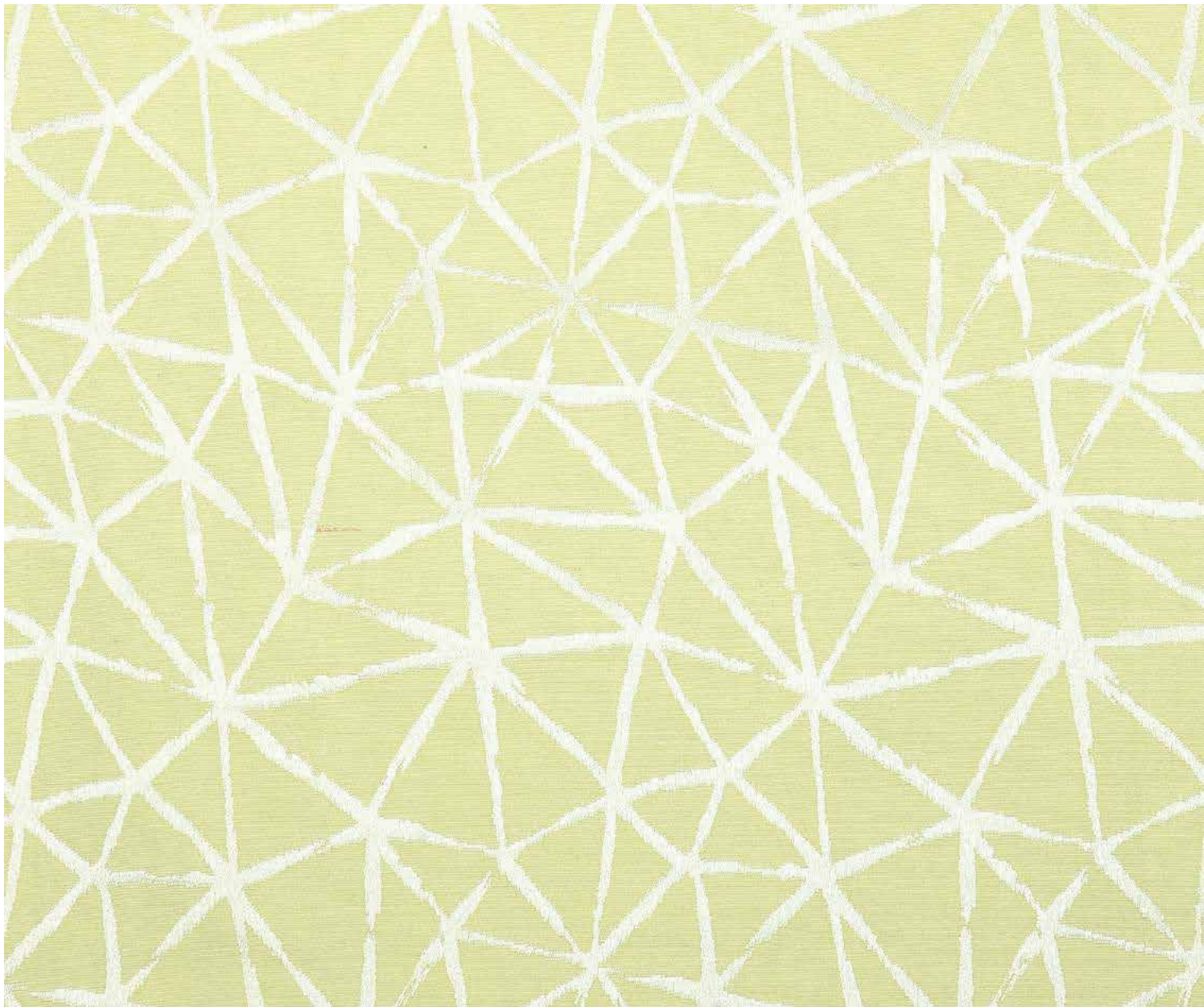


CARI

Width : 48"
Vertical : 17 CMS
Horizontal : 16.50 CMS
Weight : 260 GSM

SERIAL NO. : CT127

Composition : 48% Poly./52% Cotton
Colour Shades May Slightly Vary From Dye Lot To Dye Lot



CARI

Width : 48"
Vertical : 19 CMS
Horizontal : 16.50 CMS
Weight : 260 GSM

SERIAL NO. : CT128

Composition : 48% Poly./52% Cotton
Colour Shades May Slightly Vary From Dye Lot To Dye Lot



CARI

Width : 48"
Vertical : 22.50 CMS
Horizontal : 16.50 CMS
Weight : 260 GSM

SERIAL NO. : CT129

Composition : 48% Poly./52% Cotton
Colour Shades May Slightly Vary From Dye Lot To Dye Lot



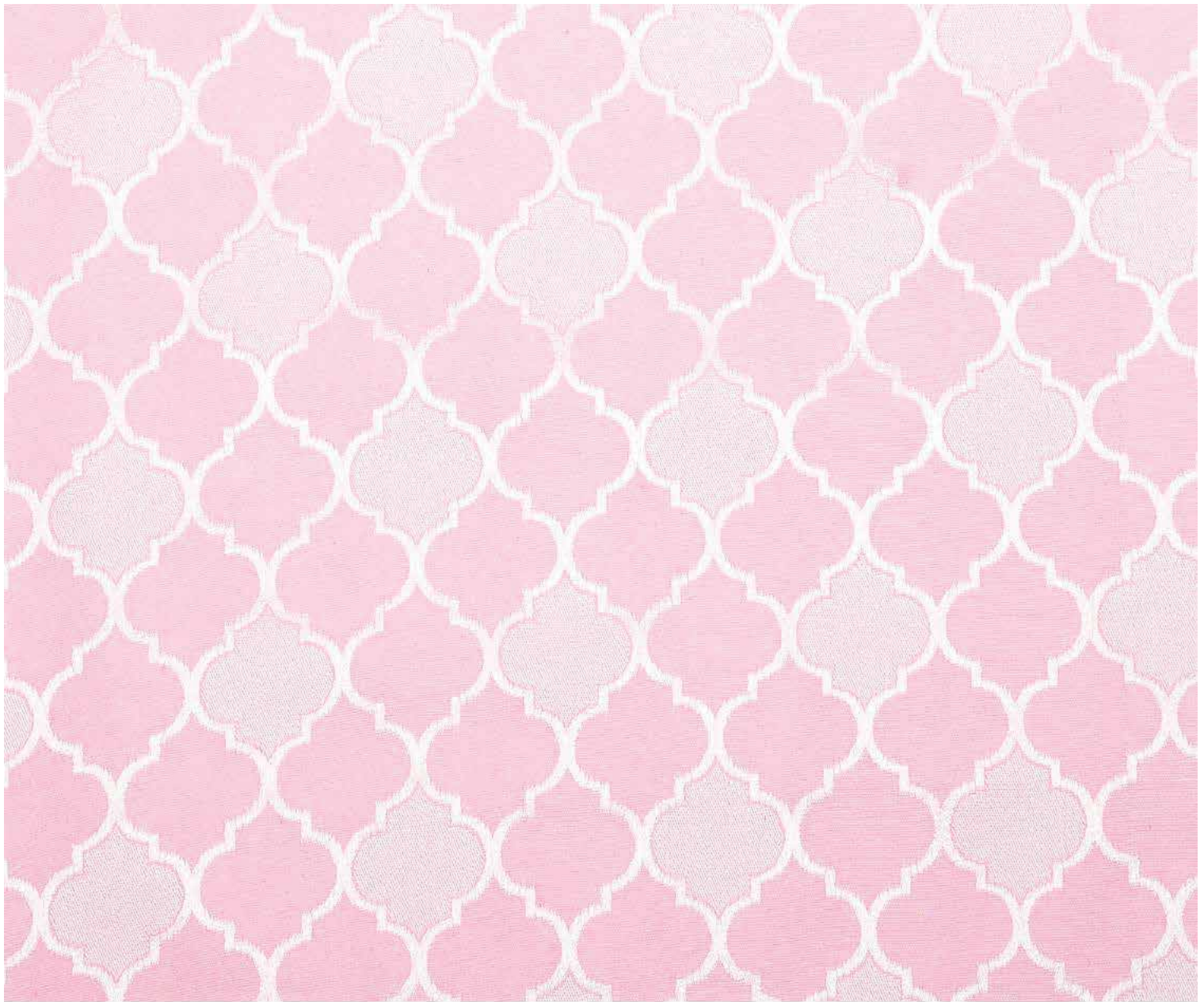
CARI

Width : 48"
Vertical : 12 CMS
Horizontal : 17 CMS
Weight : 260 GSM

SERIAL NO. : CT130

Composition : 48% Poly./52% Cotton

Colour Shades May Slightly Vary From Dye Lot To Dye Lot



CARI

Width : 48"
Vertical : 10.50 CMS
Horizontal : 8 CMS
Weight : 260 GSM

SERIAL NO. : CT131

Composition : 48% Poly./52% Cotton
Colour Shades May Slightly Vary From Dye Lot To Dye Lot

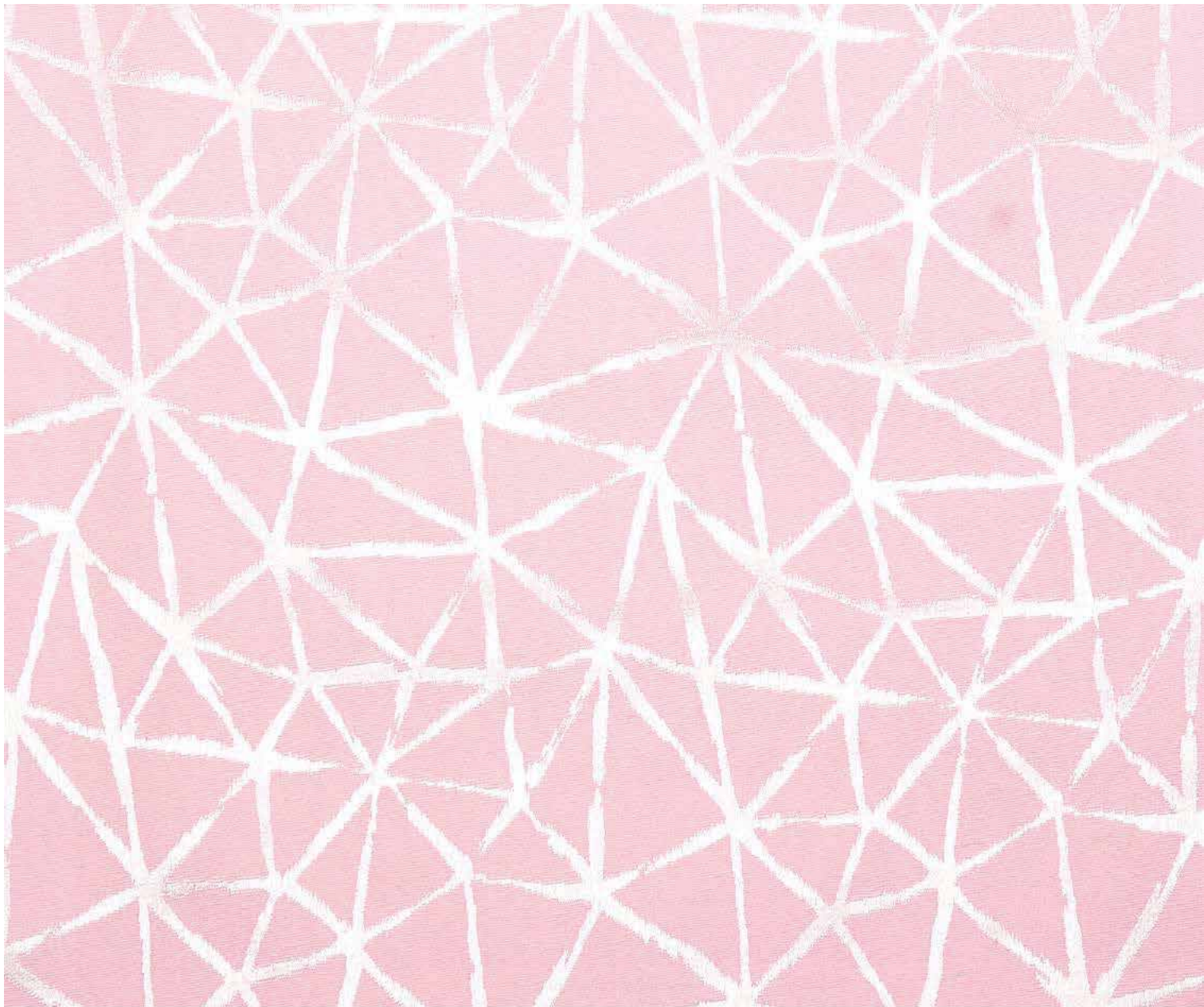


CARI

Width : 48"
Vertical : 17 CMS
Horizontal : 16.50 CMS
Weight : 260 GSM

Composition : 48% Poly./52% Cotton
Colour Shades May Slightly Vary From Dye Lot To Dye Lot

SERIAL NO. : CT132



CARI

Width : 48"
Vertical : 19 CMS
Horizontal : 16.50 CMS
Weight : 260 GSM

SERIAL NO. : CT133

Composition : 48% Poly./52% Cotton
Colour Shades May Slightly Vary From Dye Lot To Dye Lot



CARI

Width : 48"
Vertical : 22.50 CMS
Horizontal : 16.50 CMS
Weight : 260 GSM

SERIAL NO. : CT134

Composition : 48% Poly./52% Cotton
Colour Shades May Slightly Vary From Dye Lot To Dye Lot



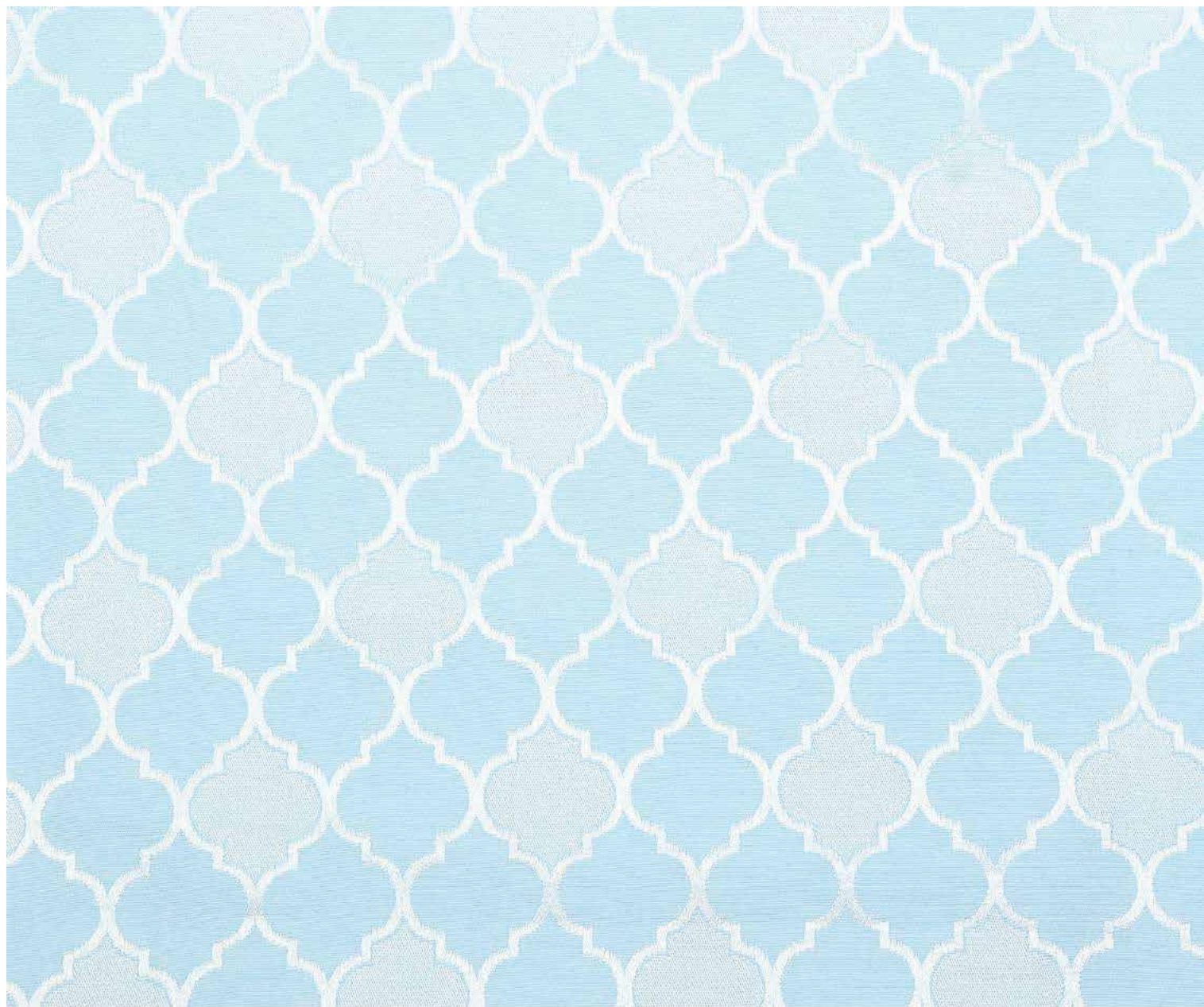
CARI

Width : 48"
Vertical : 12 CMS
Horizontal : 17 CMS
Weight : 260 GSM

SERIAL NO. : CT135

Composition : 48% Poly./52% Cotton

Colour Shades May Slightly Vary From Dye Lot To Dye Lot



CARI

Width : 48"
Vertical : 10.50 CMS
Horizontal : 8 CMS
Weight : 260 GSM

Composition : 48% Poly./52% Cotton
Colour Shades May Slightly Vary From Dye Lot To Dye Lot

SERIAL NO. : CT136

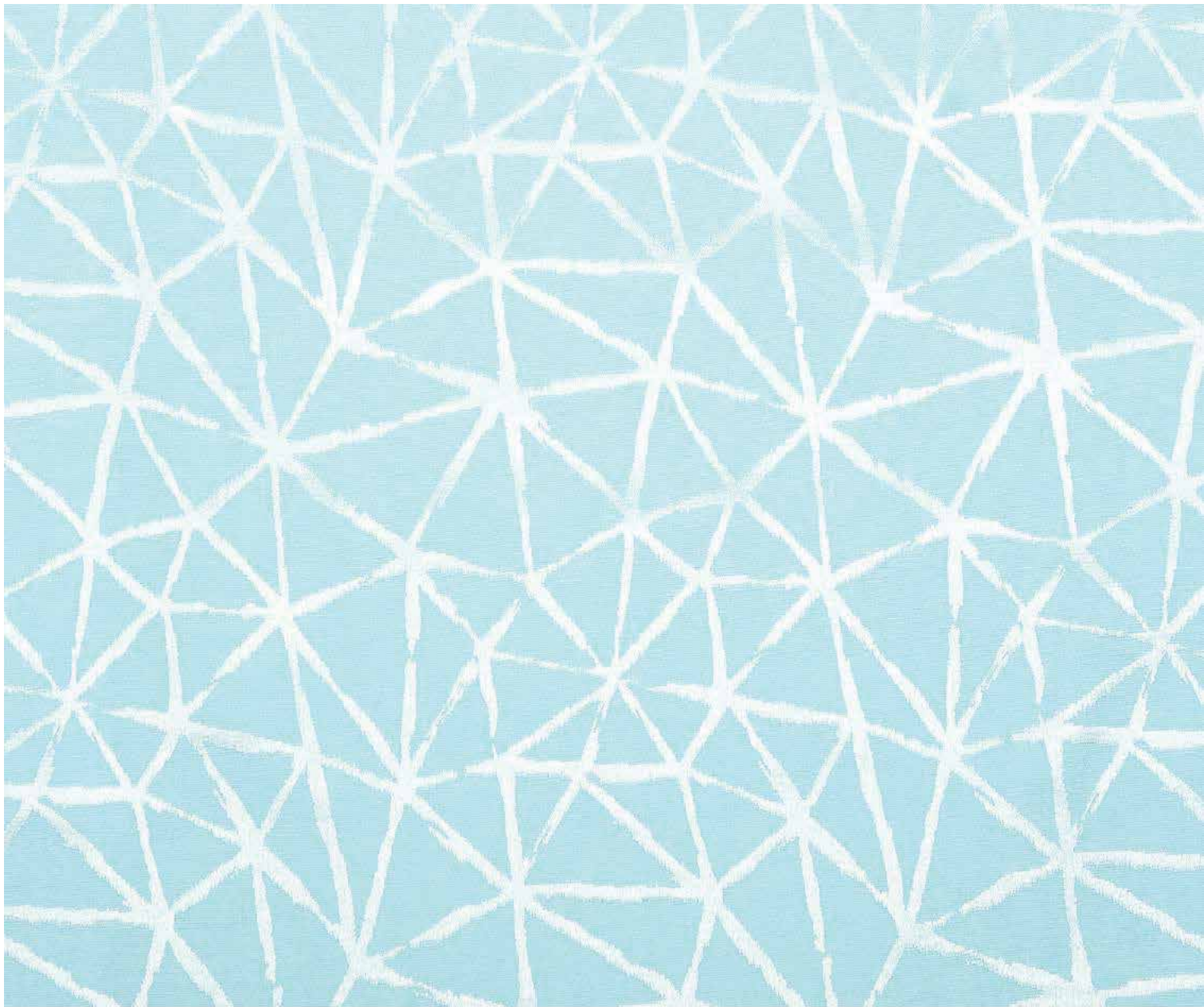


CARI

Width : 48"
Vertical : 17 CMS
Horizontal : 16.50 CMS
Weight : 260 GSM

SERIAL NO. : CT137

Composition : 48% Poly./52% Cotton
Colour Shades May Slightly Vary From Dye Lot To Dye Lot



CARI

Width : 48"
Vertical : 19 CMS
Horizontal : 16.50 CMS
Weight : 260 GSM

SERIAL NO. : CT138

Composition : 48% Poly./52% Cotton
Colour Shades May Slightly Vary From Dye Lot To Dye Lot

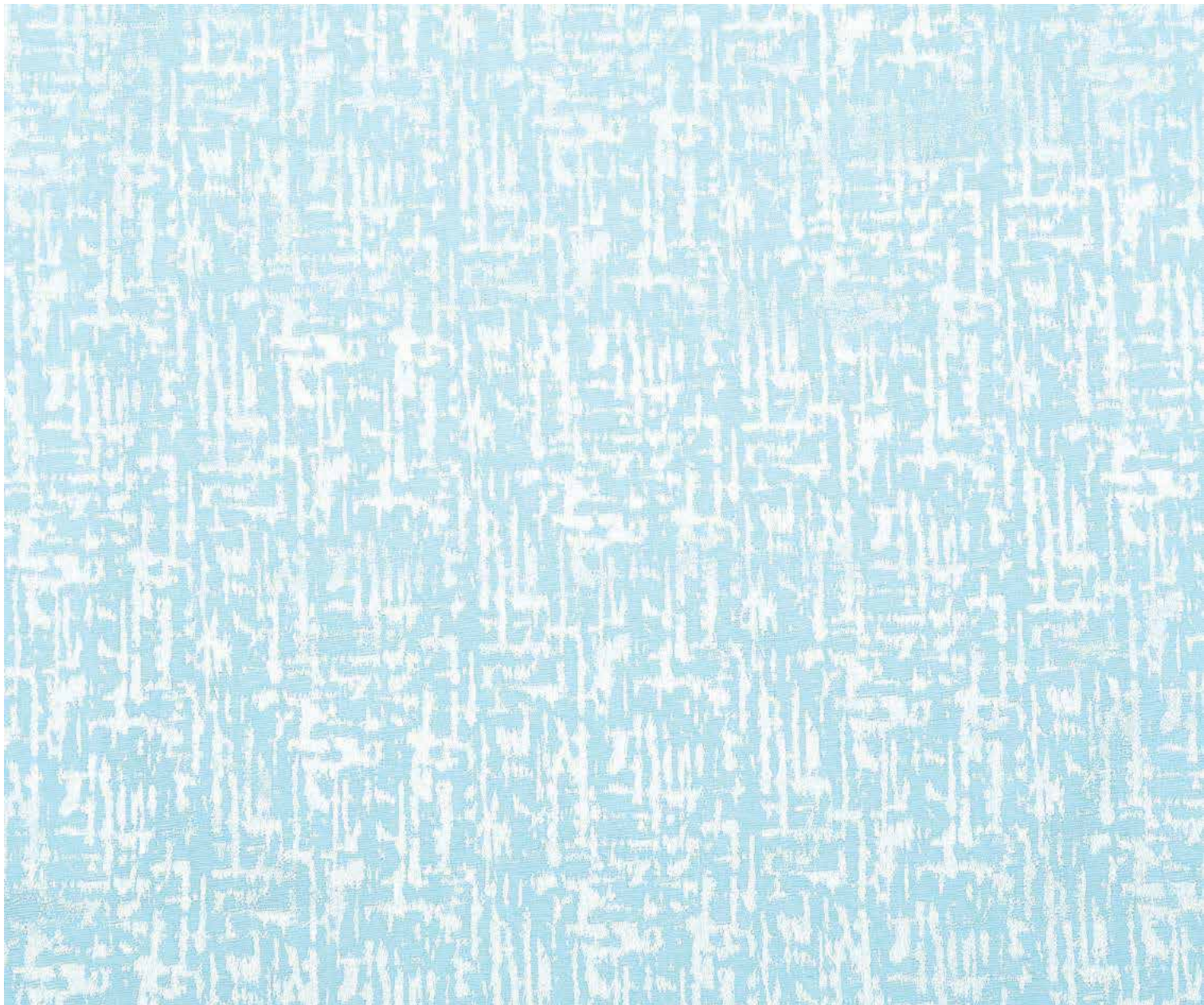


CARI

Width : 48"
Vertical : 22.50 CMS
Horizontal : 16.50 CMS
Weight : 260 GSM

SERIAL NO. : CT139

Composition : 48% Poly./52% Cotton
Colour Shades May Slightly Vary From Dye Lot To Dye Lot



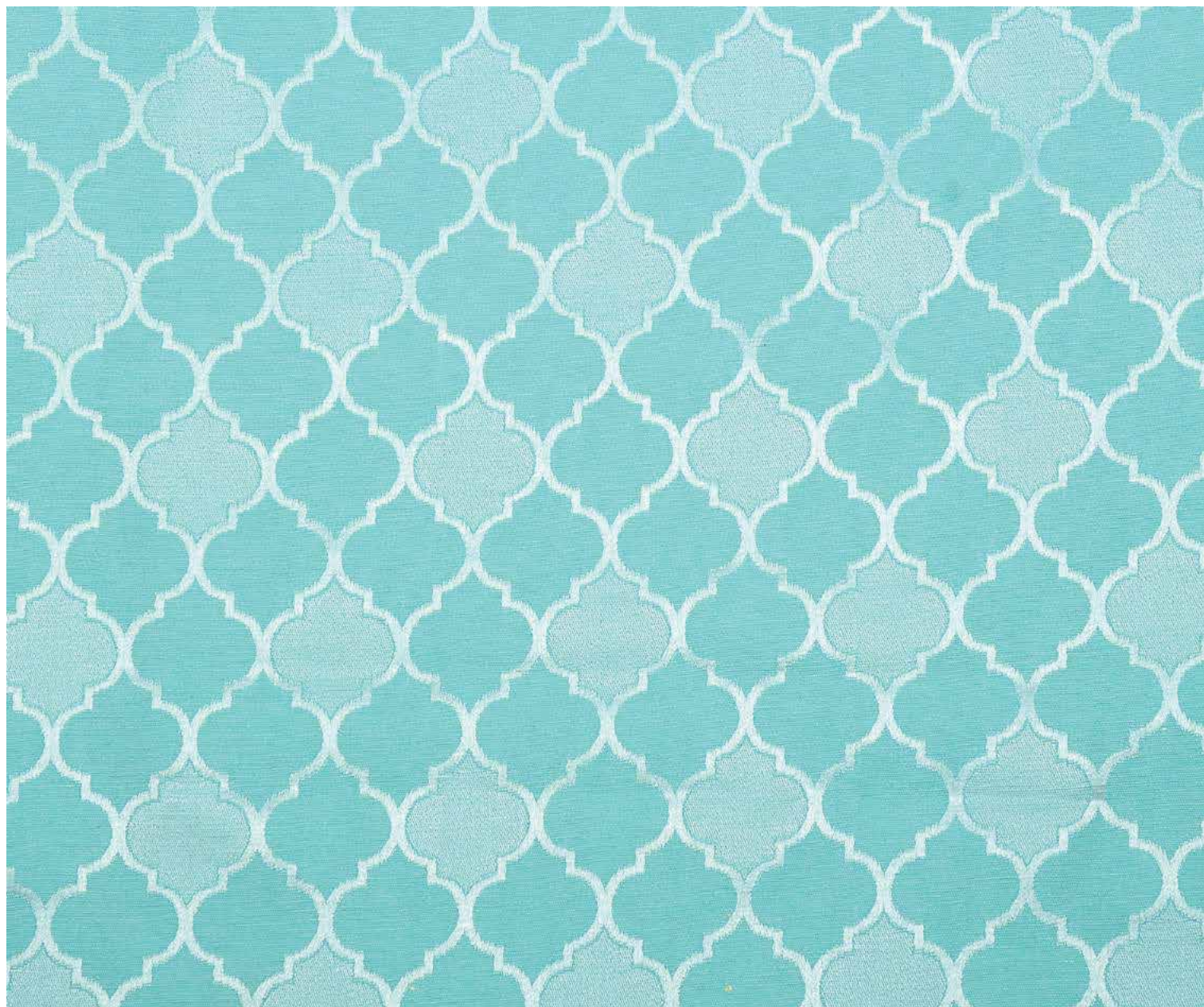
CARI

Width : 48"
Vertical : 12 CMS
Horizontal : 17 CMS
Weight : 260 GSM

SERIAL NO. : CT140

Composition : 48% Poly./52% Cotton

Colour Shades May Slightly Vary From Dye Lot To Dye Lot



CARI

Width : 48"
Vertical : 10.50 CMS
Horizontal : 8 CMS
Weight : 260 GSM

SERIAL NO. : CT141

Composition : 48% Poly./52% Cotton
Colour Shades May Slightly Vary From Dye Lot To Dye Lot



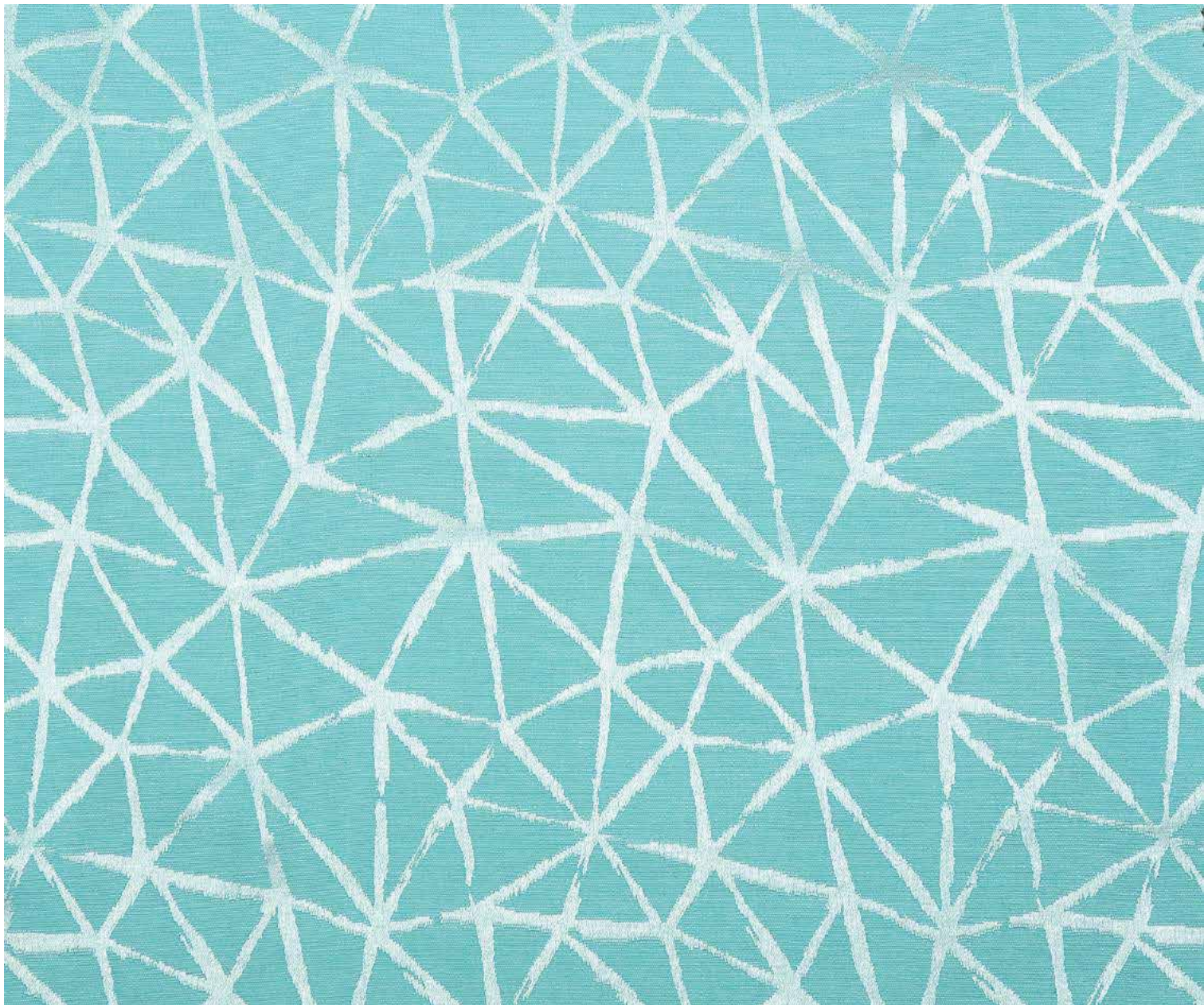
CARI

Width : 48"
Vertical : 17 CMS
Horizontal : 16.50 CMS
Weight : 260 GSM

Composition : 48% Poly./52% Cotton

Colour Shades May Slightly Vary From Dye Lot To Dye Lot

SERIAL NO. : CT142



CARI

Width : 48"
Vertical : 19 CMS
Horizontal : 16.50 CMS
Weight : 260 GSM

Composition : 48% Poly./52% Cotton
Colour Shades May Slightly Vary From Dye Lot To Dye Lot

SERIAL NO. : CT143



CARI

Width : 48"
Vertical : 22.50 CMS
Horizontal : 16.50 CMS
Weight : 260 GSM

SERIAL NO. : CT144

Composition : 48% Poly./52% Cotton
Colour Shades May Slightly Vary From Dye Lot To Dye Lot



CARI

Width : 48"
Vertical : 12 CMS
Horizontal : 17 CMS
Weight : 260 GSM

SERIAL NO. : CT145

Composition : 48% Poly./52% Cotton

Colour Shades May Slightly Vary From Dye Lot To Dye Lot

