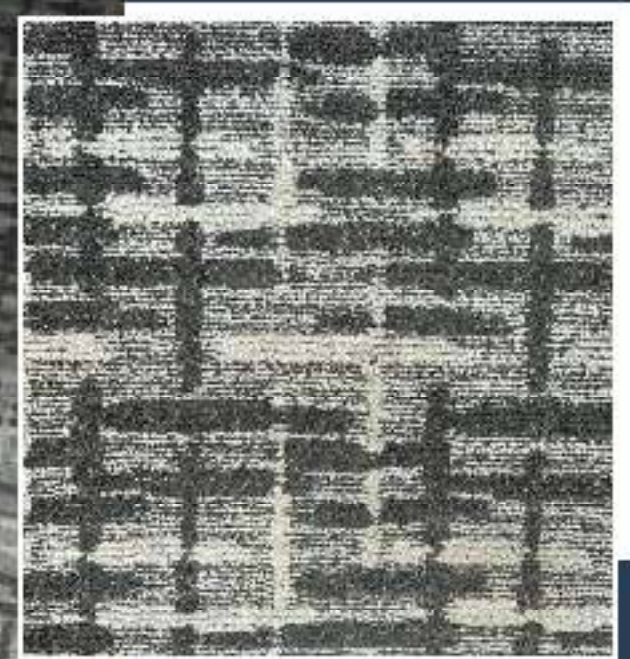




BLENDS

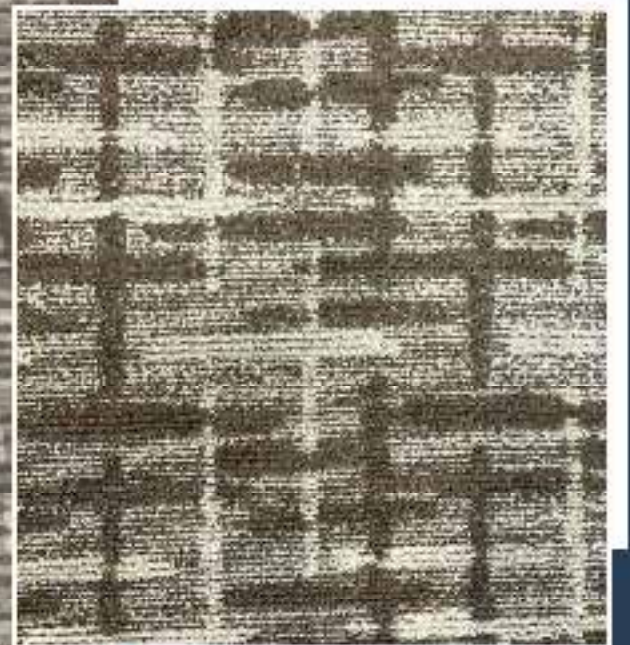
Wall to Wall Carpets



**Blend
4511 - Grey**



**Blend
4512 - Blue**



**Blend
4513 - Brown**

Technical Data

Construction	Graphic Loop Pile
Yarn	100% Polyolefin
Primary structure	Woven polypropylene
Secondary Backing	Action Back with Eco-Friendly Additive
Gauge	1/10
Pile Weight	480 gm/m²
Total Weight	1365 gm/m²
Total Height	8/8 mm
Width	2 mtr
Length	30 l.mtr
Wear Classification	Light Commercial
Color fastness to Light	ISO 105-B02 Grade 5 or Higher
Smoke Density Test	ASTM E 882-08
Fire Class	ASTM D 2859/CPSC FF 1-70 FLAMMABILITY TEST ASTM R 648 RADIANT PANEL TEST
Static Control	AATCC - 175 Stain Resistance
Certificate	  
Application	
Features	