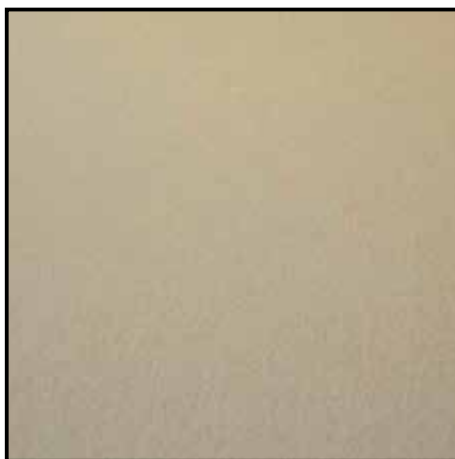


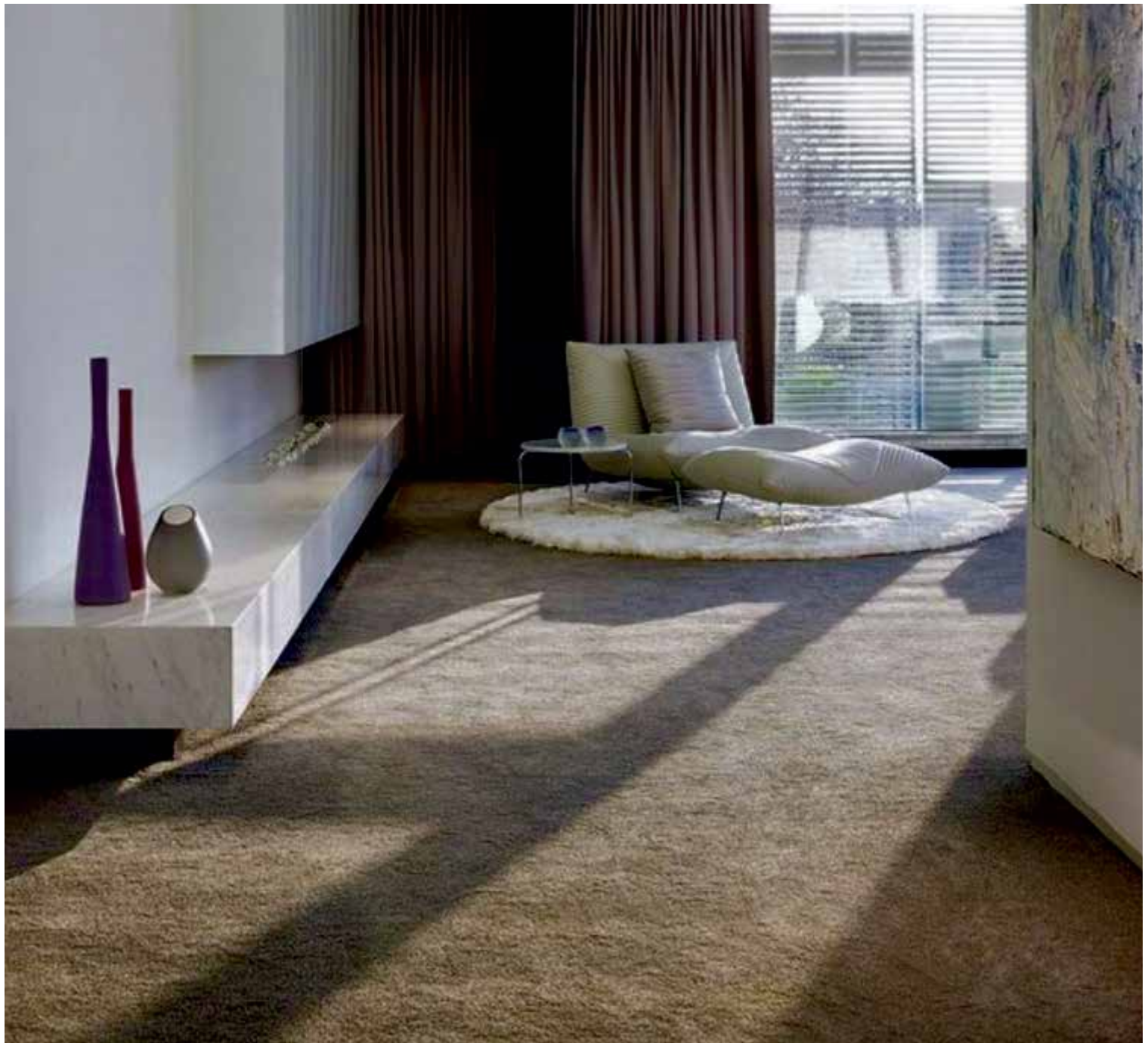


Satin



3601

Roll Size: 4 mtr. X 20-25 mtr.



3602

Roll Size: 4 mtr. X 20-25 mtr.



3603

Roll Size: 4 mtr. X 20-25 mtr.



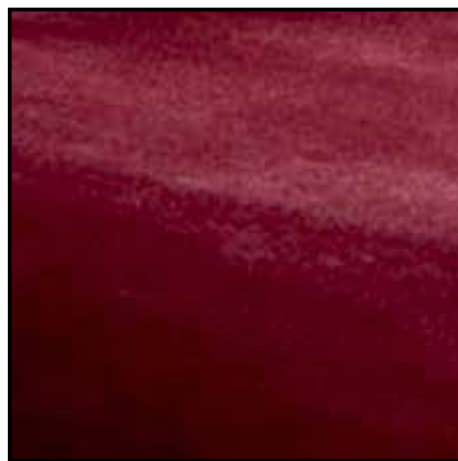
3604

Roll Size: 4 mtr. X 20-25 mtr.



3605

Roll Size: 4 mtr. X 20-25 mtr.



3606


Roll Size: 4 mtr. X 20-25 mtr.



3609

Roll Size: 4 mtr. X 20-25 mtr.

SATIN

Pile Construction	Cut Pile
Yarn	PP Heatset Soft
Tufting Gauge	1/8
Pile Weight	720 g/m
Total Weight	1800 g/m
Pile Height	10 mm
Total Height	12 mm
Primary Backing	Woven Polypropylene
Secondary Backing	Soft Felt back with Eco-friendly Additive
Width	4.00 mtr. (\pm 0.02)
Length	20 to 25 L. mtr.
Wear Classification	Residential Light Commercial
Color fastness to Light	ISO 105-B02 Grade 5 or Higher
Smoke Density Test (NIST)	Passes (ASTM E662: GB/T 8627-1999)
Fire Class	Passes (ASTM E648: GB 8624-2006)
Static Control	<3.0KV (AATCC-134:GB/T.18044-2000)
Application	
Features	