

Wall to Wall Carpet

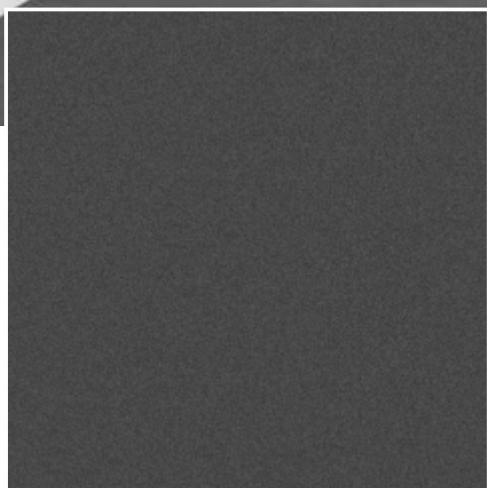




4901

Colour - Buff

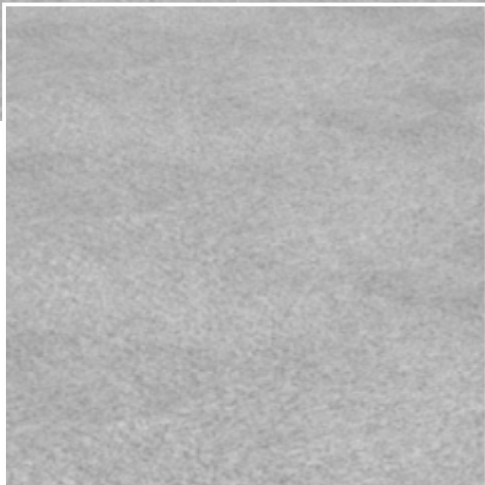
Roll Size : 4 mtr. X 25-30 mtr.



4903

Colour - Ash Grey

Roll Size : 4 mtr. X 25-30 mtr.



4905

Colour - Silver Grey

Roll Size : 4 mtr. X 25-30 mtr.



4906

Colour - Cherry

Roll Size : 4 mtr. X 25-30 mtr.



4907

Colour - Desert Camel

Roll Size : 4 mtr. X 25-30 mtr.



4909

Colour - Royal Blue

Roll Size : 4 mtr. X 25-30 mtr.



4910

Colour - Chilly Red

Roll Size : 4 mtr. X 25-30 mtr.



4912

Colour - Amber Gold

Roll Size : 4 mtr. X 25-30 mtr.

Technical Specification

Pile Construction	Cut Pile
Yarn	PP Freize
Tufting Guage	1/8 th
Pile Weight	550 g/m
Total Weight	1510 g/m
Total Height	9 mm
Width	4.00 mtr(± 0.02)
Length	25 to 30 l. mtr.
Primary Backing	Woven Polypropylene
Secondary Backing	Action Back with Eco-friendly Additive